



RCC Weekly Bulletin

The weekly newsletter of the Rural Community Council (Leicestershire & Rutland)

Monday 8th December 2008

Calor Village of the Year success



Neil and Suzanne Hermsen receive the business award for Uppingham

The RCC is celebrating the success of two Leicestershire & Rutland villages in the CALOR Village of the Year Competition.

Seagrave in Leicestershire and Uppingham in Rutland between them scooped three of the five central region awards at the awards ceremony held at the Guildhall in London last week. Uppingham was delighted to receive the 'business award' for its interaction with business in the area while Seagrave won the 'people' category which is about making the place a better place to live.

Seagrave also scooped the Central region prize competition against 7 other Midlands villages. They were narrowly beaten in this section by Levington in Suffolk.

Collecting the awards were Neil and Suzanne Hermsen for Uppingham and Rodney Bint and Muriel Hill for Seagrave.

The two villages have both recently worked alongside the Rural Community Council to undertake Parish Plans which have helped the communities to work together to make their communities even better places to live.

Oakthorpe Parish Plan launched



On a cold damp night on the 2nd of December 2008, the parish plan group and residents of Oakthorpe, Donisthorpe and Acresford turned out at the Oakthorpe Leisure Centre to launch their parish plan.

The event was led by Kelly Grove and Helen Gravett, the joint chairs of the Donisthorpe steering group, and was well attended by local residents, as well as Parish Council Chairman, Chris Keeley. Also attending were a representative from Leicestershire County Council, Victoria Bowers, County Councillor - Mr. S. Sheahan, and the North West Leicestershire Community Development Officer for the RCC, Jessica Grudgings.

The Parish Council has already started to implement needs that residents voiced as important within the plan, but the steering group are still looking for new volunteers to help improve the Parish.

The RCC offered its support and advice for the future to the volunteers in order for the plan to be taken forward, as well as congratulating the group on the enormous amount of time and effort that has been put in by all those who helped to complete this process.

www.ruralcc.org.uk

Please email the Editor, Bridget Masters, with any news items: bmasters@ruralcc.org.uk

Have an eco-friendly Christmas tree



Most of us will be thinking about putting up our Christmas trees fairly soon so here are a few tips to make sure they are eco-friendly:

- **F**armed fir trees have been sprayed with pesticides and other chemicals. Their fake, non-renewable, non-recyclable and non-biodegradable plastic counterparts are no better.
- **B**uy from a small-scale sustainable grower and/or make sure the tree has Forest Stewardship Council (FSC) accreditation. Go to www.soilassociation.org/christmas for a list of producers.
- **C**hoose a tree with roots so it can be replanted.
- **I**f replanting isn't an option then most local councils run Christmas tree recycling schemes.
- **D**ecorate an exterior tree or houseplant instead.
- **K**eep your tree decorations natural – suggestions include pinecones, small apples, bundles of cinnamon sticks and bright seasonal berries
- **H**olly, berries and ivy draped over picture frames and mantelpieces are the perfect alternative to tacky tinsel and plastic baubles.
- **A**t www.tree2mydoor.com you can buy your own holly tree so for the future you don't have to support the trade in holly branches.

Cinderella in a Suitcase at Snibston

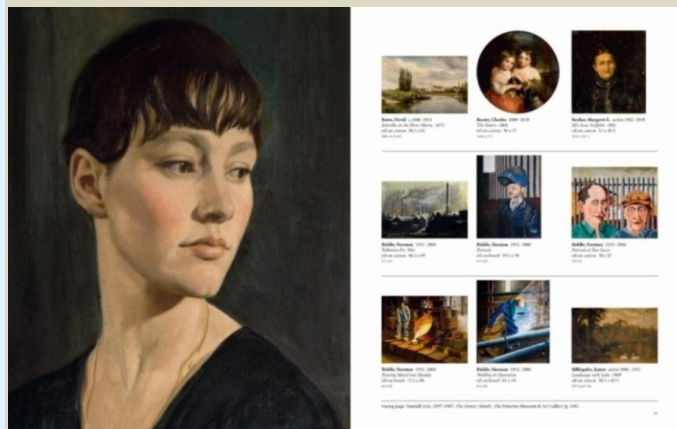


The pantomime will be on Saturday, December 27, 2pm at Snibston Century Theatre. Tickets cost £3.50.

Cinderella in a Suitcase is an entertaining puppet pantomime which promises music, magic, songs and jokes in an exquisite and beautiful re-telling of this story. Full of originality and invention the show is presented by Bill Brookman

For booking call 01509 236 175 or 01530 278 444 or e-mail: 106440.407@compuserve.com

Does your Community Centre of Village Hall have any original oil/acrylic/tempera paintings?



The Public Catalogue Foundation is a registered charity, which was set up to record all the oil/acrylic/tempera paintings in public ownership throughout the UK. The Foundation aims to create a complete illustrated record of the nation's collection of paintings and make this accessible to the public through a series of catalogues and a free website.

Please contact Yasmin Canvin if you have any information about your paintings:
Write to: 104 Top Road, Griffydam, Leicestershire, LE67 8HU; email yasmin.canvin@thepcf.org.uk or telephone 01530 224453

Visit Santa at Snibston in his magical grotto



Youngsters can visit Santa in his magical grotto at Snibston every weekend leading up to Christmas and on Monday 22 and Tuesday 23 December between 10.30am and 4pm.

Santa's final guest appearance will be on Christmas Eve, between 10.30am and 2pm, finishing at the slightly earlier time because of his long night ahead.

For just £5 per child, youngsters can spend time with Santa in his log cabin and roaring log fire and have a quality gift to take home and treasure.

Snibston is offering free child entry to the museum between the 27th and 31st December, with only a small charge for the amazing activities on offer.

Snibston will be closed from the 1st to 16th January 2009 for essential maintenance and training. They re-open for business on **Saturday 17th January 2009.**

For more information and to pre book the activities please contact Snibston on 01530 278 444 or email Snibston@leics.gov.uk.

Keep your eye on the website for details at www.snibston.com

Find an empty home

A web site has been launched by campaigning charity *Empty Homes Agency* enabling people to report and view empty properties across Britain. The aim is to get them back into use as quickly as possible.

Simply enter you area post code to find out or report what is happening in your area. <http://reportemptyhomes.com>.

This week's Christmas Events



Tuesday 9th December - Lubenham Heritage Group are holding a 'Christmas Fayre of the Past', 7.30pm at Lubenham Village Hall.

Friday 12th December – there is a Christmas Concert with the Ratcliffe Chorale, 7.30pm at Old Dalby Church. Adults £6, Children £3 (includes glass of wine and nibbles). Tickets can be purchased from Old Dalby Village Shop, Joan Revill 823017 or Pat Tomlinson 822248. Proceeds to the Nick Branston Memorial Fund (Sponsoring music students) and Old Dalby Church.

Saturday 13th and Sunday 14th December - Rutland Railway Museum is holding a Santa Special Weekend.

Saturday 13th December – Glen Parva Christmas Concert, 7pm - 9pm at Glen Parva War Memorial Hall. £2 admission includes refreshments, Contact Glen Parva Parish Council for more details 0116 2771450.

Visit our web site at www.ruralcc.org.uk to view our events calendar. Complete and return the online form to have your event included.

Post in time for Christmas



Last posting day for first class mail is 20th December

Last posting day for 2nd class mail is 18th December

Pharmacy plan threatens rural GPs

The Rural Services Network reports that Rural doctors' surgeries could be forced to close if the government presses ahead with plans to strip GPs of their right to dispense drugs.

Countryside campaigners have reacted angrily to a consultation on the government's Pharmacy White Paper which closed on 20th November. Currently, rural GPs can dispense drugs if the nearest pharmacy is more than a mile away. However, the consultation details plans to withdraw GPs' right to dispense medicine.

The Commission for Rural Communities said the proposal had failed to reflect the specific access needs of rural areas. A commission spokesman said:

"Many rural GP's rely considerably upon income from their dispensary services to offset the provision of other services. Where dispensary income is lost, services and staffing would have to be reappraised in light of a reduced budget. Potentially, this could lead to the closure of dispensary services within many rural doctors' practices, with a detrimental effect on access to pharmacy services."

Rural GPs should be encouraged to continue dispensing and selling over the counter medications, the spokesman added. This would give all patients the option of leaving the surgery with their medication while at the same time maintaining patient choice.

The Rural Services Network said the proposals threatened to massively disadvantage vulnerable communities across swathes of the English countryside. A network spokesman said:

"Although we appreciate such an outcome may not be intentional there is a real threat to yet another essential area of rural fabric. Rural medical practitioners and the patients they serve are desperately alarmed. The government should take specific measures to ensure rural dwellers are not adversely affected by proposals."

The Dispensing Doctors' Association said the proposals didn't appear to provide any benefits to patients, patient choice or rural services.

Water good way to reduce drunken behaviour



(l-r) Emma Andrews, community safety officer for Harborough, Mel Wisher and Tom Arnold of Sainsbury's and Alan Paul, community safety manager for Harborough, with the bottled water and Lock 'Em Inn leaflets.

Bottled water is being handed out free to revellers in town centres in a bid to prevent binge-drinking and alcohol-fuelled violence.

The bottles, donated by Sainsbury's in Market Harborough, have been given out in the town centre at night to help break up alcohol consumption among young people.

The initiative is being carried out by the Harborough District Community Safety Partnership, made up of police, councils and other organisations, as part of its Operation Christmas Presence campaign, which also includes increased policing levels, licensed premises inspections and targeted CCTV coverage.

Research into incidents of violent behaviour in Lutterworth and Market Harborough town centres has revealed people aged between 17 and 24 are most likely to be assaulted, with the assailants being of similar age. Data shows that 75% of the violence takes place in Market Harborough town centre and 25% in Lutterworth town centre, with an equal amount of male and female perpetrators.

There is also a clear link between violence and alcohol.

Cllr Paul Dann, Chairman of the Community Safety Partnership, said: "The message is simple, enjoy a drink, but be sensible. Too much alcohol could result in illness, a night in the cells, or a hefty fine."

Bottles of water and Lock 'Em Inn leaflets – which warn of the consequences of alcohol-related violence – were given out on Saturday, Nov 29 in Market Harborough and will also be handed out on Friday, December 12, in Harborough and on Saturday, December 13, in Lutterworth.