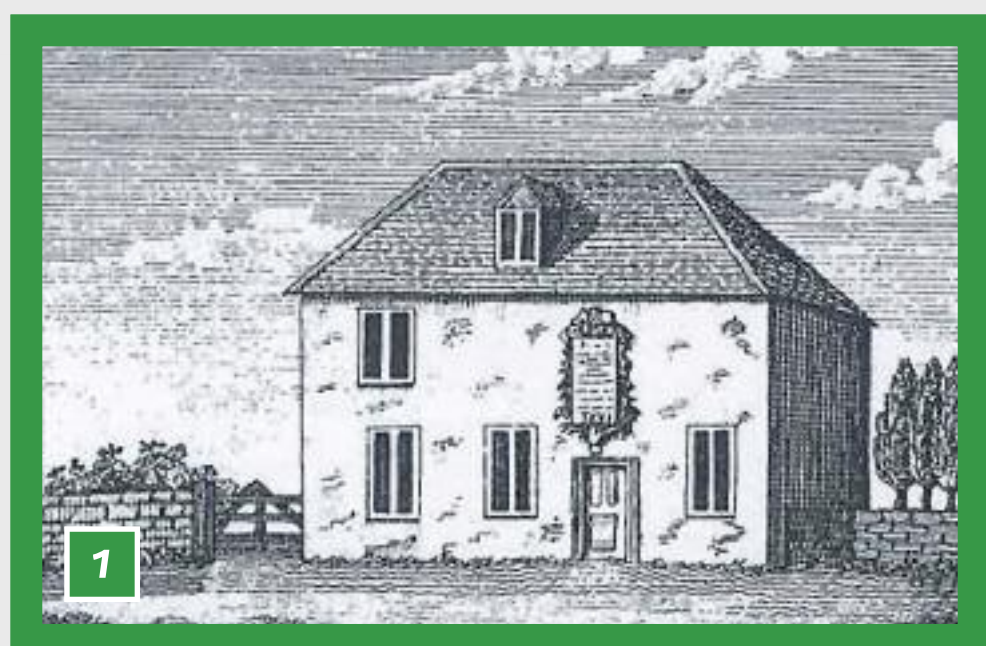


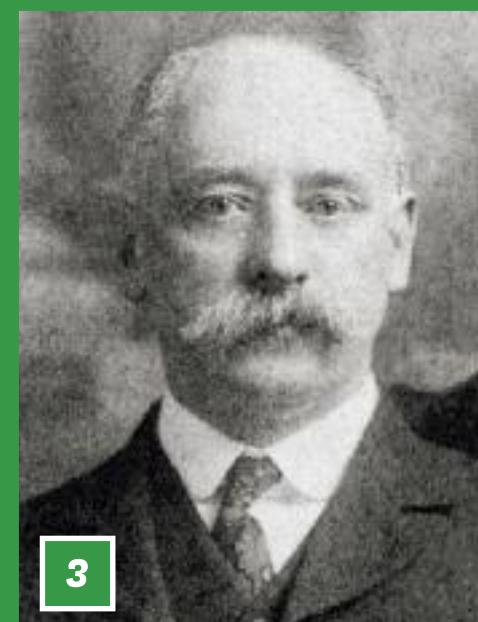
Rawlins School

In 1691 Thomas Rawlins founded the Thomas Rawlins Trust to fund a school to educate thirty-four poor boys from Woodhouse, Woodhouse Eaves, Quorndon and Barrow upon Soar. Although he lived in London the family had local connections and it is believed that Thomas had moved to Woodhouse in 1665 to escape the Great Plague of London.

The School was initially successful, but by 1864 standards and the number of pupils had declined, resulting in the School closing and the Trust being taken into the control of the Charity Commissioners.



Scan here to play the audio for this board.



- 1 Thomas Rawlins School Woodhouse, 1793.
- 2 Rawlins Grammar School, Quorn, early 1900s.
- 3 The first headmaster at Quorn, Mr Hensman, 1892 to 1918.
- 4 Miss Marjorie Sawdon, Headmistress, 1948 to 1970.
- 5 Rawlins Grammar School, Quorn, whole school photo (46 pupils), 1901. In the centre is the headmaster, Edward Hensman, and below him in the dark dress is Miss Vial, head of preparatory.

The School Opens in Quorn

In 1890 William Farnham, an existing trustee and the squire of Quorn, submitted a scheme to the Charity Commission to create a school in Quorn for boys aged 7 to 16 from the immediately surrounding villages. On 15th September 1892 the School opened in the back room of Quorn Village Hall, with sixteen boys. Apart from a few scholarships, fees were charged but the Christian ethos was retained and Rawlins remains a Church of England school today.

In 1893 the current site of Rawlins was bought from John Davys Cradock of Quorn Court and the new school building opened on 25th April 1897. In July 1898 there were thirty-nine pupils and, as the School had capacity for seventy, girls were admitted a term later. This was said to make Rawlins the first co-educational secondary school south of the Trent.

After WW2

Until WW2 most children in the village attended Quorn National School up to the age of 14. The 1944 Education Act provided free secondary education for all and in 1946 Thomas Rawlins Grammar School came under the control of the Local Education Authority. In 1948 the School became girls only.

Other Significant Changes

- 1927** - The school crest was changed from a tortoise (the seal of Thomas Rawlins) to the two crescents of the Farnham coat of arms.
- 1938** - The Farnham Hall opened, financed by a bequest from George Francis Farnham.
- 1955** - The old vicarage was purchased and became the sixth form centre.
- 1967** - Thomas Rawlins Grammar School became the much larger Rawlins School and Community College; co-educational for pupils 14 to 19, with a range of adult and community provision. Under the pioneering 'Leicestershire System' the eleven-plus had been abolished and this was the new 'comprehensive system'.
- 1974** - Outdoor swimming pool opened.
- 2011** - Rawlins became an Academy.
- 2013** - The age range was increased to 11 to 18 years.

Today, Rawlins Academy has around 1,600 students, a far cry from the 16 boys over 300 years ago.

